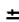
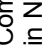
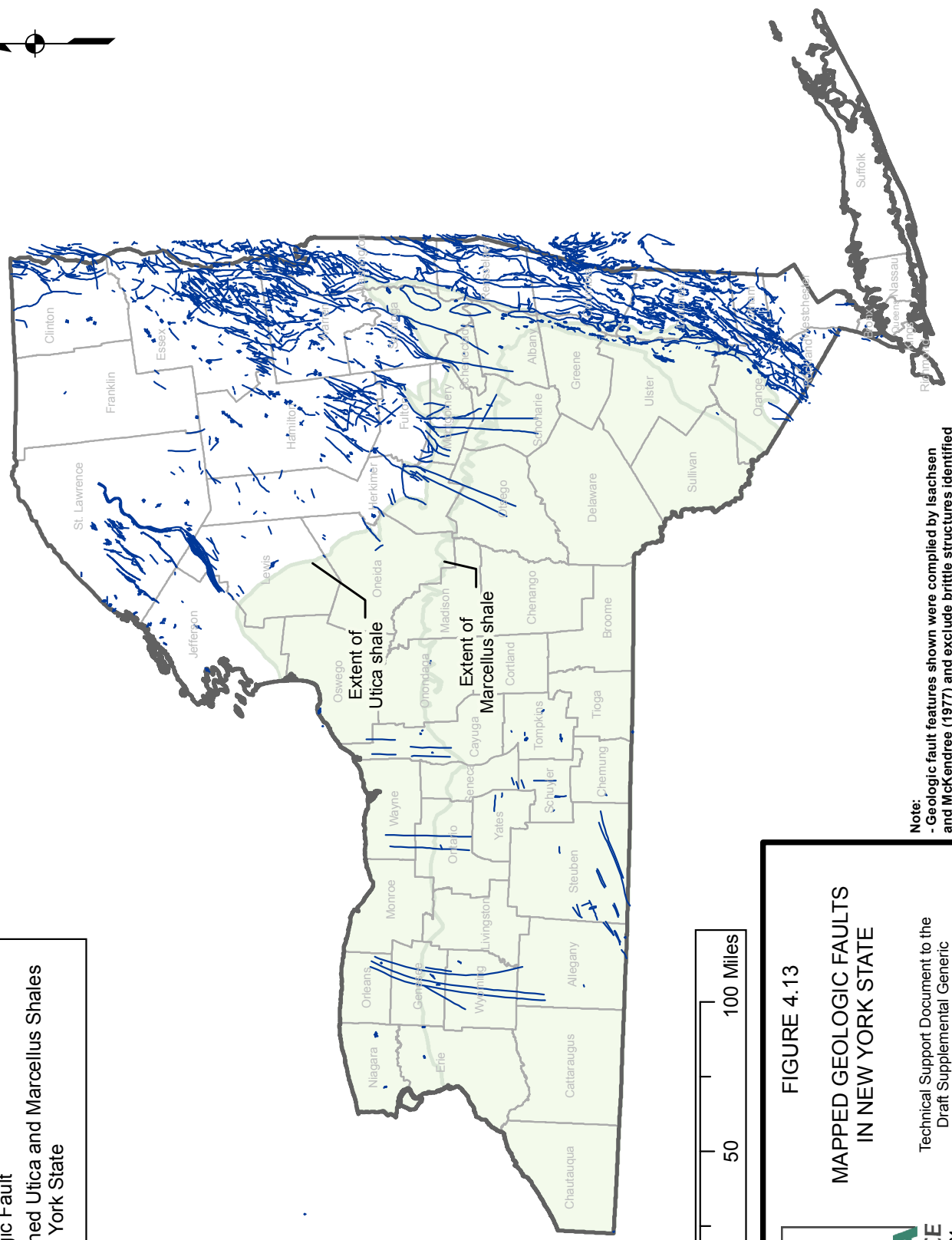




**Legend**

-  Geologic Fault
-  Combined Utica and Marcellus Shales in New York State



**Note:**  
 - Geologic fault features shown were compiled by Isachsen and McKendree (1977) and exclude brittle structures identified as drillholes, topographic, and tonal linear features.

FIGURE 4.13

**MAPPED GEOLOGIC FAULTS  
 IN NEW YORK STATE**



**ALPHA  
 GEOSCIENCE**  
 Alpha Project No. 09104

Technical Support Document to the  
 Draft Supplemental Generic  
 Environmental Impact Statement